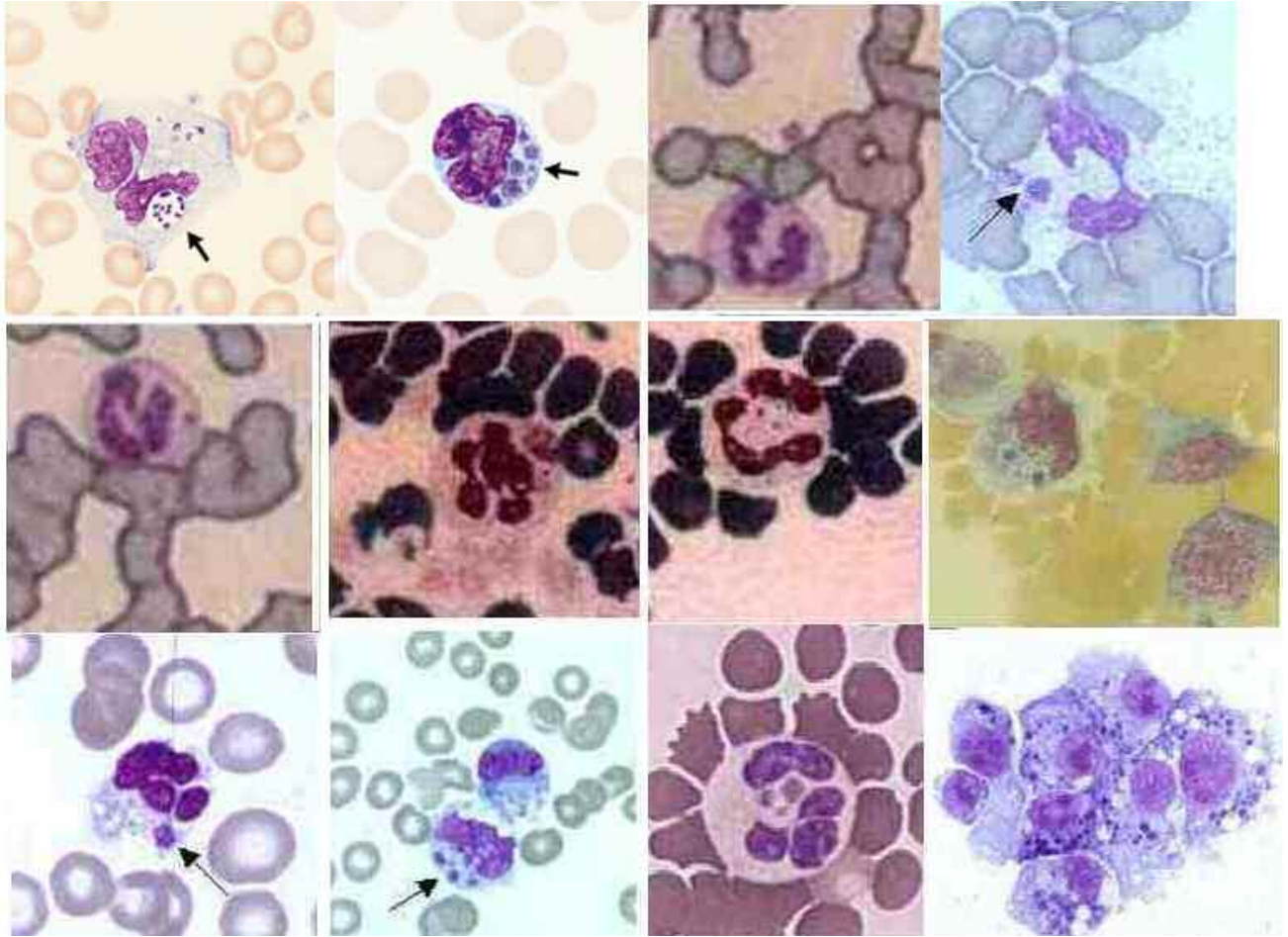
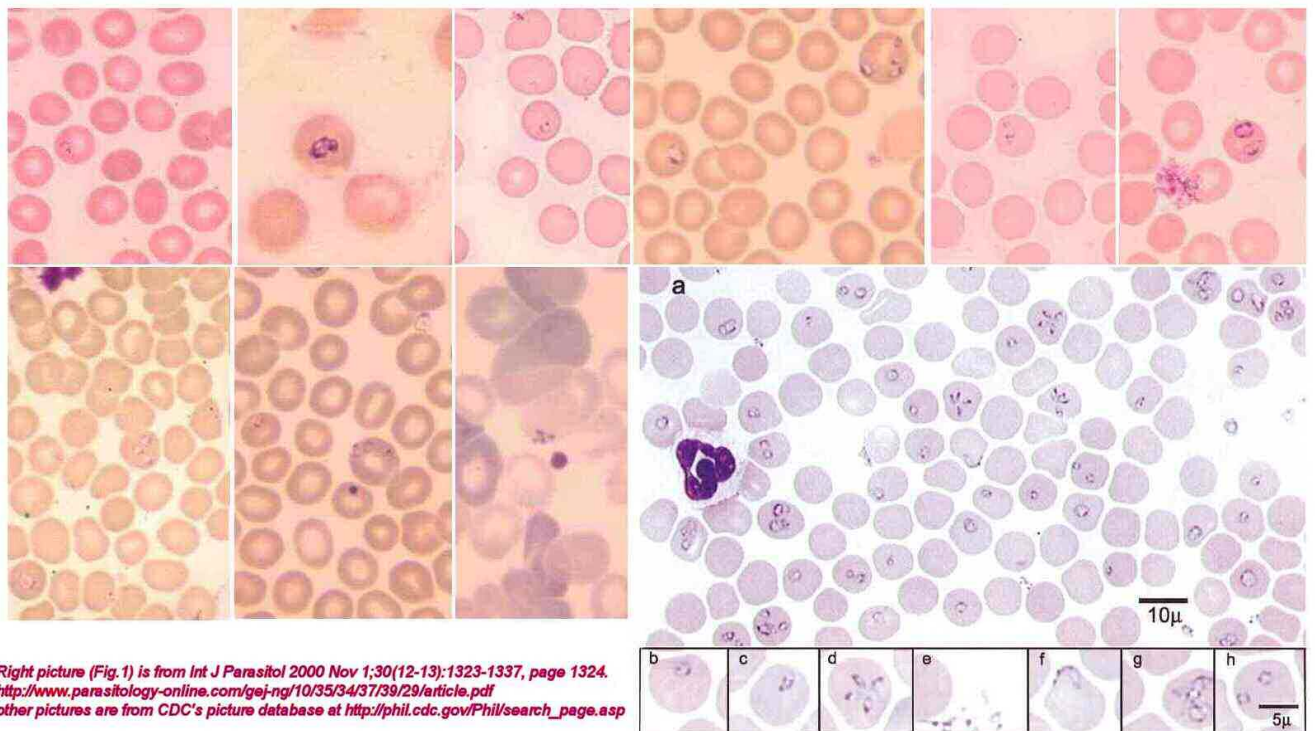


Sample pictures of Ehrlichia and Babesia
 from different sources: found on WWW, in published articles or send to me by researchers (non-danish patients)

EHRlichia



BABESIA



Right picture (Fig. 1) is from *Int J Parasitol* 2000 Nov 1;30(12-13):1323-1337, page 1324.
<http://www.parasitology-online.com/gej-ng/10/35/34/37/39/29/article.pdf>
 other pictures are from CDC's picture database at http://phil.cdc.gov/Phil/search_page.asp

Fig. 1. Giemsa-stained thin blood smear of WA1-type parasites in hamster erythrocytes. Final magnification for (a) is 1112 \times . Final magnification for (b-h) is 2000 \times . (a) Oil-immersion field demonstrating severe parasitaemia; (b) ring form; (c) pear-shaped; (d) tetrad or maltese-cross form; (e) exo-erythrocytic merozoites; (f,g) ameboid forms; (h) multiply-infected erythrocyte.